



MONTHLY MEMBERSHIP PROGRESS REPORT

District 202 J

Results as of: 04/30/2019

GMT: CLIFFORD HEYWOOD

LOCATION NEW ZEALAND

GMT CA

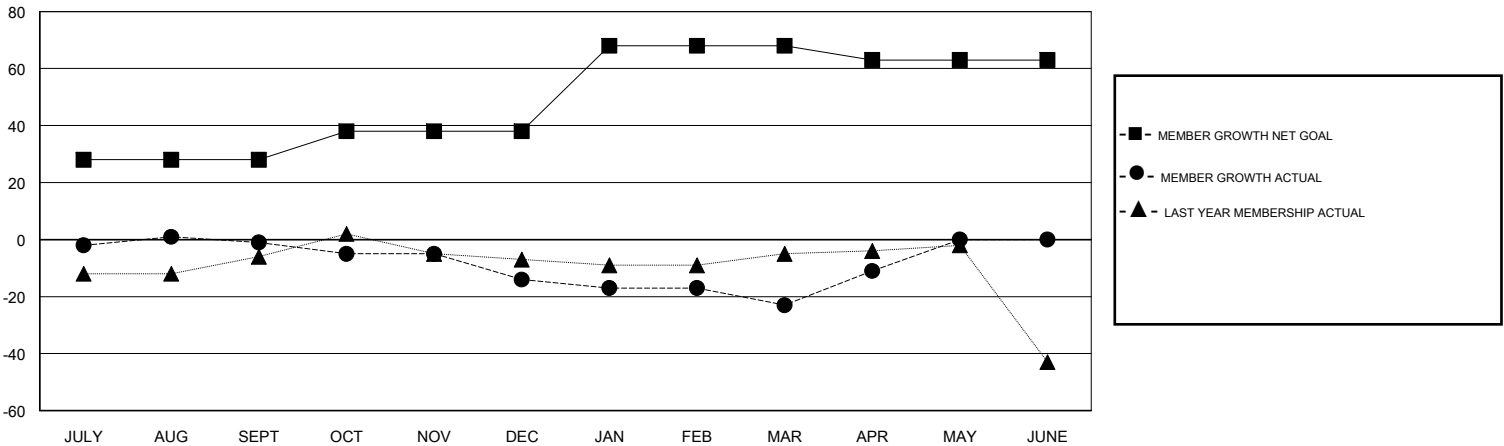
Clubs			
RESULTS FOR 2018-2019			
QUARTER	NEW CLUB GOAL	NEW CLUBS	DROPPED CLUBS
JULY/AUG/SEPT	1	0	1
OCT/NOV/DEC	0	0	0
JAN/FEB/MAR	1	0	2
APR/MAY/JUNE	0	0	0

Members			
RESULTS FOR 2018-2019			
QUARTER	MEMBER GROWTH NET GOAL	MEMBER GROWTH ACTUAL	DROPPED MEMBERS ACTUAL (including transfers)
JULY/AUG/SEPT	28	25	19
OCT/NOV/DEC	10	12	24
JAN/FEB/MAR	30	14	18
APR/MAY/JUNE	-5	19	7

GOALS AND ACTUAL NEW CLUBS CUMULATIVE



GOALS AND ACTUAL MEMBERS CUMULATIVE



DROPPED CLUBS: 3

22 CLUBS OF 38 ADDED 1 OR MORE NEW MEMBERS

GENDER DISTRIBUTION	
MALE	947 (76.13%)
FEMALE	297 (23.87%)
Women Percentage Fiscal Year Goal: 25%	

DROPPED MEMBERS	
DECEASED	16
CLUB CANCELLED	0
OTHER	52
TOTAL	68

[CLICK HERE FOR CUMULATIVE MEMBERSHIP DATA](#)

TOTAL FAMILY UNIT MEMBERS	46
FAMILY MEMBERS PAYING HALF DUES	23